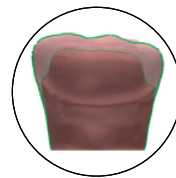


PrepScanner

Designed for dental schools seeking objective, scalable prep assessment and faculty calibration.

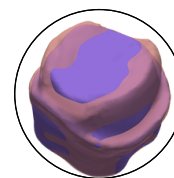
- Structured self-assessment aligned with CODA standards
- ADEX-aligned evaluation
- Includes an ADEX-aligned starter pack of preps and rubrics
- Scalable SIM lab assessment
- Data-driven prep analysis
- Customizable institutional rubrics
- STL import from school-provided intraoral scanners
- Integrated with the DenTeach™ ecosystem
- Faculty calibration and shared standards



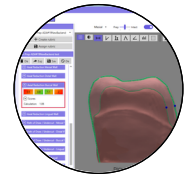
Prep Border Detection



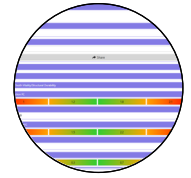
Auto Grading



Student Self-Assessment



Customizable Rubrics



ADEX-Aligned Evaluation

Why PrepScanner?

PrepScanner is a scalable digital assessment platform designed for modern SIM labs. It enables institutions to integrate structured scanning, objective grading, and student self-assessment into existing workflows without requiring one scanner per student. By combining laser-based precision, customizable rubrics, and ADEX-aligned evaluation capabilities, PrepScanner supports faculty calibration, accelerates student competency development, and strengthens institutional competitiveness in dental education.

BENEFITS

Educators

- Improve grading consistency across the cohort with more objective assessment
- Support faculty calibration with shared rubrics
- Reduce manual measurement work through streamlined grading
- Provide a structured workflow with faculty feedback

Students

- Receive detailed performance feedback
- Use self-study to review the ideal prep before lab
- Use self-assessment to strengthen their skills
- Compare their preps to a gold standard to better understand grading criteria

Curriculum

- Integrate scalable digital assessment into the SIM lab workflow
- Support competency-based education with measurable metrics
- Enable data-driven curriculum refinement and continuous improvement
- Strengthen program differentiation for prospective students

NOW AVAILABLE: PREPSCANNER⁺

Scan



Use school-provided intraoral scanners to capture a full or partial arch

Import & Process



Import the STL file and complete calibration, trimming, and grading

Objective Evaluation



Maintain the same objective evaluation precision and feedback tools



DT-PrepScanner
by Tactile Robotics

Scan the QR code to request your free demo unit and trial package.
Discover how PrepScanner fits into your curriculum.





Watch the Demo Video



Request a Demo & Trial

Our Integrated Solutions for Modern Dental Education

PrepScanner is a proud member of the DenTeach™ family, an all-in-one platform advancing dental education through smart grading and data-driven feedback. From instructor-led teaching to self-assessment tools, DenTeach delivers a complete learning ecosystem.



DenTeach Premium (for Instructors)

Full-featured system for real-time instruction



DenTeach Premium (for Students)

Full-featured system for real-time learning for dental students



DenTeach Basic (for Students)

Entry-level solution with visual/audio guidance



PrepScanner

Laser-based, robotized, data-driven prep grading



PrepScanner+

Software platform that connects to your intraoral scanner



DenTeach SaaS

Software-only solution for real-time instruction and assessment

Developed by Tactile Robotics | Canada
Patented and patent-pending technologies



DT-PrepScanner
by Tactile Robotics



tactilerobotics.ca/prepscanner-platform



1-888-822-7621



demo@tactilerobotics.ca