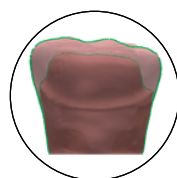


PrepScanner

Designed for international dentist training programs seeking objective, scalable assessment.

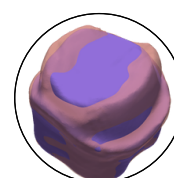
- Structured self-assessment aligned with CODA standards
- ADEX-aligned evaluation for bench-test preparation
- Includes an ADEX-aligned starter pack of preps and rubrics
- Data-driven prep analysis
- Customizable institutional rubrics
- STL import from your intraoral scanners
- Integrated with the DenTeach™ ecosystem
- Instructor review of trainee work on-site or remotely between training sessions



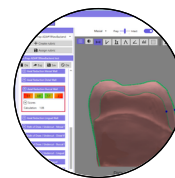
Prep Border Detection



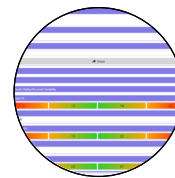
Auto Grading



Student Self-Assessment



Customizable Rubrics



ADEX-Aligned Evaluation

Why PrepScanner?

PrepScanner is a scalable digital assessment platform designed for modern SIM labs and bench-test training environments. It enables institutions to integrate structured scanning, objective grading, and trainee self-assessment into existing workflows without requiring one scanner per trainee. By combining laser-based precision, customizable rubrics, and ADEX-aligned evaluation capabilities, PrepScanner accelerates trainee competency development, supports bench-test preparation, and strengthens institutional competitiveness.

BENEFITS

Educators

- Improve grading consistency across the cohort with more objective assessment
- Support faculty calibration with shared rubrics
- Reduce manual measurement work through streamlined grading
- Provide a structured workflow with educator feedback

Bench-Test Trainees

- Receive detailed performance feedback on bench-test preps
- Use self-study to review the ideal prep before lab
- Use self-assessment to strengthen their skills
- Compare their preps to a gold standard to better understand bench-test grading criteria

Program

- Integrate scalable digital assessment into bench-test training workflows
- Support competency-based education with measurable metrics
- Support data-driven program refinement and continuous improvement
- Differentiate your program for international dentists

NOW AVAILABLE: PREPSCANNER⁺

Scan



Scan a full or partial arch for bench-test prep assessment

Import & Process



Import the STL file and complete calibration, trimming, and grading

Objective Evaluation



Maintain objective evaluation precision and instructor feedback tools



DT-PrepScanner
by Tactile Robotics

Scan the QR code to request your free demo unit and trial package.
Discover how PrepScanner fits into your program.





Watch the Demo Video



Request a Demo & Trial

Our Integrated Solutions for Modern Dental Training

Supports bench-test preparation with objective prep analysis, structured feedback, and measurable progress tracking.

PrepScanner is a proud member of the DenTeach™ family, an all-in-one platform advancing dental education through smart grading and data-driven feedback. From instructor-led training to self-assessment tools, DenTeach delivers a complete learning ecosystem.



DenTeach Premium
(for Educators)

Full-featured system for real-time instruction



DenTeach Premium
(for Trainees)

Full-featured system for real-time learning for trainees and bench-test candidates



DenTeach Basic
(for Trainees)

Entry-level solution with visual/audio guidance



PrepScanner

Laser-based, robotized, data-driven prep grading



PrepScanner⁺

Software platform that connects to your intraoral scanner



DenTeach SaaS

Software-only solution for real-time instruction and assessment

Developed by Tactile Robotics | Canada
Patented and patent-pending technologies

