



# PrepScanner

Data-driven 3D prep evaluation and licensure exam readiness.

- ADEX
- NDEB/NDECC
- OSCE-style assessments
- International board pathways

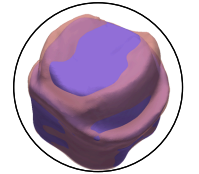


TR-BR-2025-03

## Why PrepScanner?

A unified solution for students, instructors, and dental boards.

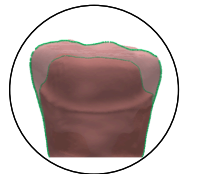
- Objective, repeatable grading - no subjectivity
- Consistent scoring aligned to licensure exam expectations
- Identifies critical errors instantly
- Tracks performance growth over time
- Enables confident exam preparation & remediation



Student Self-assessment



3D Visualization



Prep Border Detection

## Exam-Aligned Evaluation Criteria

PrepScanner maps directly to clinical competency scoring models used in:

- ADEX (CDCA-WREB-CITA)
- NDEB/NDECC Canada
- SRTA, CRDTS, WREB legacy
- International boards (UK ORE, Middle East exams, Asia-Pacific)



### Exam-Ready Preparation & Evaluation

#### Laser-Based 3D Scanning

- Accurate, repeatable preparation capture.

#### Automated Scoring

- Objective evaluation aligned to board criteria.

#### Customizable Rubrics

- Matches ADEX, NDEB/NDECC, ORE, etc.



### Independent Skill Development

#### Self-Assessment Mode

- Students correct errors independently.

#### Virtual Instructor Guidance

- 24/7 step-by-step practice support.

#### Cloud Performance Records

- All progress tracked in one place.



### Fairness, Calibration & Global Access

#### International Dentist Support

- Aligns skills to North American standards.

#### Faculty Calibration Tools

- Consistent grading across instructors.

#### Scanner Compatibility

- Works with major intraoral + desktop scanners.



**DT-PrepScanner**  
by Tactile Robotics



[tactilerobotics.ca/scanner](https://tactilerobotics.ca/scanner)



1-888-822-7621



[demo@tactilerobotics.ca](mailto:demo@tactilerobotics.ca)



## Our Integrated Solutions for Modern Dental Education

Objective. Consistent. Board-Ready.

PrepScanner is a proud member of the DenTeach™ family, an all-in-one platform advancing dental education through smart grading, and data-driven feedback. From instructor-led teaching to self-assessment tools, DenTeach delivers a complete learning ecosystem.



**DenTeach Premium**  
(for Instructors)

Full-featured system for real-time instruction



**DenTeach Premium**  
(for Students)

Full-featured system for real-time learning - dental students



**DenTeach Basic**  
(for Students)

Entry-level solution with visual/audio guidance



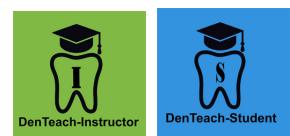
**PrepScanner**

Laser-based robotized data-driven prep grading



**PrepScanner<sup>+</sup>**

Software platform to link your intraoral scanner



**DenTeach SaaS**

Software-only solution for real-time instruction and assessment